

Information on Stolen Artifacts

The following artifacts were stolen. Read about each artifact.



A Banquet Plaque

A banquet plaque was used in ancient Mesopotamia as part of a door-locking system on important buildings. It worked similarly to a dead bolt on a modern door. The plaque was attached to the door frame. To lock the door, someone would push a peg into the center hole. The peg would hold the door in place and not allow it to open. The stolen plaque has the following images on it:

- Man and a woman celebrating an event. It is not clear what the event is.
- Two servants who are serving the man and woman.
- Musicians and dancers who are part of the celebration.



Standard Set of Merchant Weights

Mesopotamians didn't have a scale that could measure the amount of whatever goods (rice, sugar, etc.) they were buying. Instead, they used a weight system. Each merchant had a set of standard weights. When someone ordered a specific amount of rice, the merchant would place the matching weight on one side of the scale and would place rice on the other side of the scale. Once the scale was balanced, the rice would be packaged and paid for. There were severe punishments for anyone caught using weights that didn't match the standards. These weights could come in lots of different shapes like bricks or barrels. The weights stolen from the museum were decorative weights shaped like ducks! The stolen merchant weights have the following characteristics:

- The ducks are positioned to have their heads resting on their backs.
- They are made of hematite (a really hard, reddish-black mineral).
- There are 9 ducks of various sizes in the set.



Clay Envelope and Document

During this time period, all important information was recorded on clay tablets, instead of paper. This artifact was a tablet inscribed with a court record of two men fighting over the same piece of land. Both people said they owned the land. The clay tablet explains that the argument was settled by a judge. One of the men claiming to own the land was able to provide many witnesses that supported his story! The judge ruled in favor of the man with the witnesses, and he was able to keep his land. The stolen clay envelope and document have the following characteristics:

- An official seal marking it as a court document.
- A large portion broken off the back of the envelope, creating a sharp, jagged edge.
- The tablet is written in Cuneiform, the system of writing developed and used by the Mesopotamians.

Cards for Suspects

The following three cards are to be given to students who have been selected as each of the 3 suspects. Each of the three suspect students need to keep their card a SECRET.

Suspect: Museum Security Guard

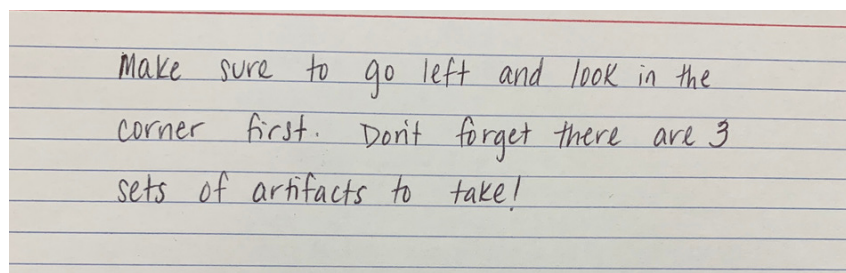
DO NOT REVEAL WHAT YOU ARE ABOUT TO READ TO ANYONE!!

You are Suspect #1. You are a museum security guard. You are guilty. You worked WITH the tourist to commit the crime. It is your job to convince the FBI agents that you did not commit the crime. You must stick to the details on this card when you answer questions. Read through the following information so you are prepared for your interview. If you are asked a question that is not listed on this card, just say “no comment.”

- There is a spot of blood on your uniform from a bloody nose you got at lunch time.
- On the night of the crime, you were not on duty at the museum. You have a receipt to show that you were at dinner.
- You know where the surveillance cameras are located in the exhibit. As a security officer, you frequently look at the video footage to make sure nothing suspicious is going on.
- You know that the Mesopotamia exhibit has a lot of EXPENSIVE artifacts that tell us about what life was like in Mesopotamia. For example, you know that the the clay envelope and document show that there was a writing system in Mesopotamia. They also show that there was a legal system with a judge to decide on the verdict. You know that this information is very important to understanding about life in ancient civilizations. You also know that artifacts are worth a ton of money. You've heard rumors that several people have tried to buy the artifacts for millions of dollars, but the museum isn't selling them.
- You know that the clay envelope has a sharp jagged edge. It isn't visible in the exhibit, but you think you remember seeing it from the back when the exhibit was being set up.
- You have a key to the exhibit. Every security guard has keys to the exhibit!
- You knew there were three sets of artifacts in the exhibit because you have patrolled this exhibit for years.
- You don't know why anyone would steal the artifacts. Who wants to try and send a clay envelope through the mail?

The following information should only be shared if you are asked directly. This information will likely give away you are guilty, so you should not bring it up unless you are directly asked. This means you should not share this information when you introduce yourself to the FBI agents. However, if you are asked about one of these topics, you must be truthful.

- You have the following blood type: unknown (meaning you have no idea!)
- You know the tourist (you grew up together and are friends).
- You do not know the construction worker. You have seen him/her at work but have never talked with him/her before.
- You have never been arrested before and have never been found guilty of a crime.
- If someone asks you for a handwriting sample, cut out the following handwriting sample below and pass it around the class.



Make sure to go left and look in the corner first. Don't forget there are 3 sets of artifacts to take!

Suspect: Tourist

DO NOT REVEAL WHAT YOU ARE ABOUT TO READ TO ANYONE!!

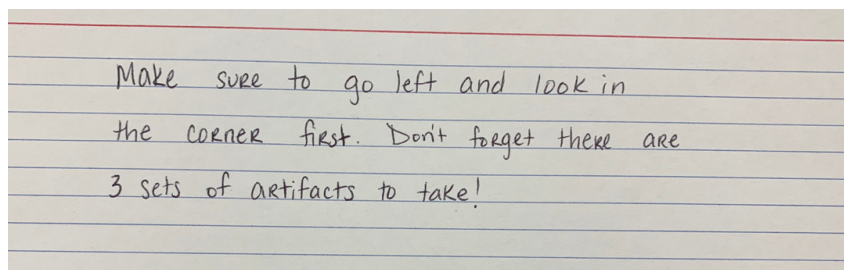
You are Suspect #2. You are a tourist who is visiting the museum. You are guilty. You worked WITH the security guard to commit this crime. It is your job to convince the FBI agents that you did not commit the crime. You must stick to the details on this card when you answer questions. Read through the following information so you are prepared for your interview.

If you are asked a question that is not listed on this card, just say “no comment.”

- There is a spot of blood on your shirt because you cut your hand on the clay envelope when you were stealing it! But, you should tell the FBI investigators that you must have gotten a paper cut during the day and didn't notice the blood on your shirt.
- On the night of the crime, you were at the museum. The museum is open at night twice a week. However, you were only in the Mesopotamia exhibit for a few minutes because you spent most of your time in the Ancient Greece exhibit.
- You don't know where the surveillance cameras are.
- You don't know where the keys are.
- You have wanted to come to the museum for many years. You know that the Mesopotamia exhibit has a lot of EXPENSIVE artifacts that tell us about what life was like in Mesopotamia a long time ago. For example, you know that the banquet plaque shows that there was a social hierarchy, as there were images of people being served by servants during an event or celebration. It also shows us that there were important buildings that needed to be locked.
- You knew there were three sets of artifacts in the exhibit because you spent a while looking at them as a museum visitor!

The following information should only be shared if you are asked directly. This information will likely give away you are guilty, so you should not bring it up unless you are directly asked. This means you should not share this information when you introduce yourself to the FBI agents. However, if you are asked about one of these topics, you must be truthful.

- You have the following blood type: A positive
- You have been arrested before and were found guilty of trespassing on the property of an art museum.
- You know the security guard (you grew up together and are friends).
- You do not know the construction worker. You have seen him/her at work but have never talked with him/her before.
- You know that the clay envelope has a sharp jagged edge. You should give a vague answer, like "I forgot how I know that" if you are asked about how you know about this jagged edge.
- If someone asks you for a handwriting sample, cut out the following handwriting sample below and pass it to the FBI agents to analyze.



Make sure to go left and look in
the corner first. Don't forget there are
3 sets of artifacts to take!

Suspect: Construction Worker

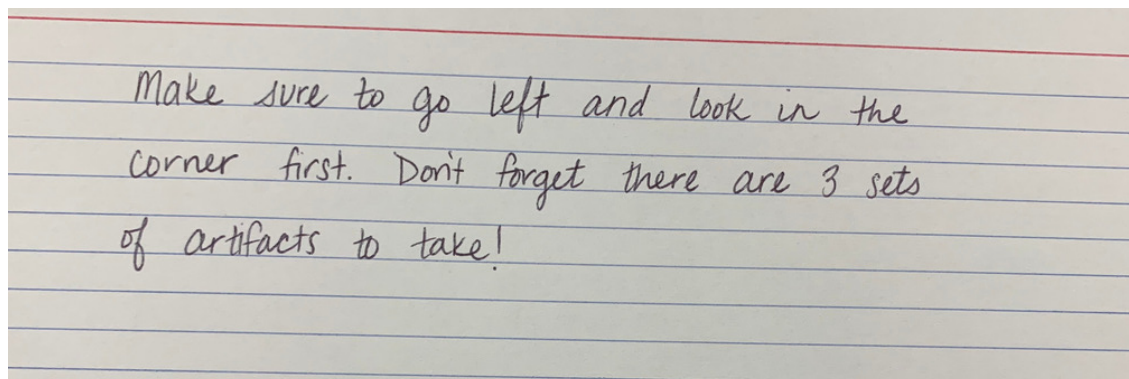
DO NOT REVEAL WHAT YOU ARE ABOUT TO READ TO ANYONE!!

You are Suspect #3. You are a construction worker who is repairing the Ancient Greece exhibit. You are innocent!!! It is your job to convince the FBI agents that you did not commit the crime. You must stick to the details on this card when you answer questions. Read through the following information so you are prepared for your interview. If you are asked a question that is not listed on this card, just say “no comment.”

- There is a spot of blood on your shirt because you hit your thumb with a hammer. You then rubbed your thumb on your shirt by accident.
- On the night of the crime, you were at the museum. Construction is done twice a week at night at this museum.
- You don't know where the surveillance cameras are.
- You have keys to the exhibits because you sometimes have to move items so you can complete your repairs.
- You don't have any knowledge on Mesopotamia. You were only at the museum to do your job. You heard once that there are a lot of expensive items at the museum, but you are an honest person and would never steal anything.
- You knew there were three sets of artifacts in the exhibit because you did repairs on this exhibit last week.

The following information should only be shared if you are asked directly. This information will likely give away you are guilty, so you should not bring it up unless you are directly asked. This means you should not share this information when you introduce yourself to the FBI agents. However, if you are asked about one of these topics, you must be truthful.

- You have the following blood type: A positive
- You had no idea the clay envelope had a sharp edge.
- You have never been arrested before or guilty of any crime.
- If someone asks you for a handwriting sample, cut out the following handwriting sample below and pass it to the FBI agents to analyze.



Make sure to go left and look in the corner first. Don't forget there are 3 sets of artifacts to take!

Looking at Evidence

Take a look at evidence from the crime scene and read information that police have gathered! Then, decide what information you still need to determine who committed the crime.

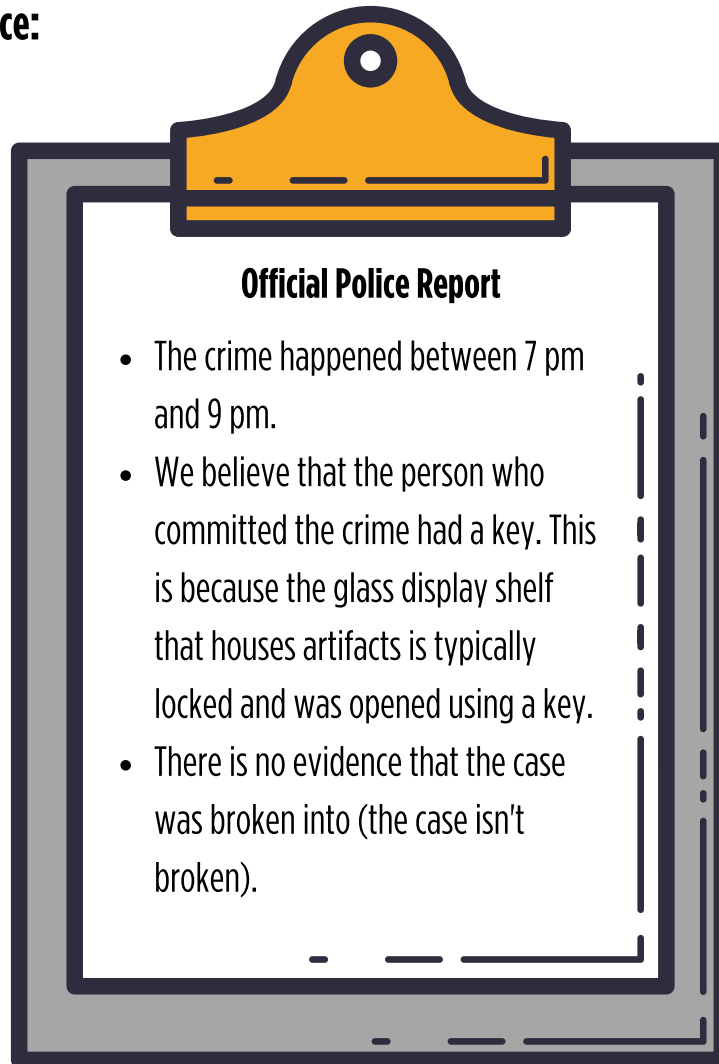
**Droplets of blood were found on the floor near the case where the artifacts were kept.
Police have identified that the blood found on the case was A-positive.**



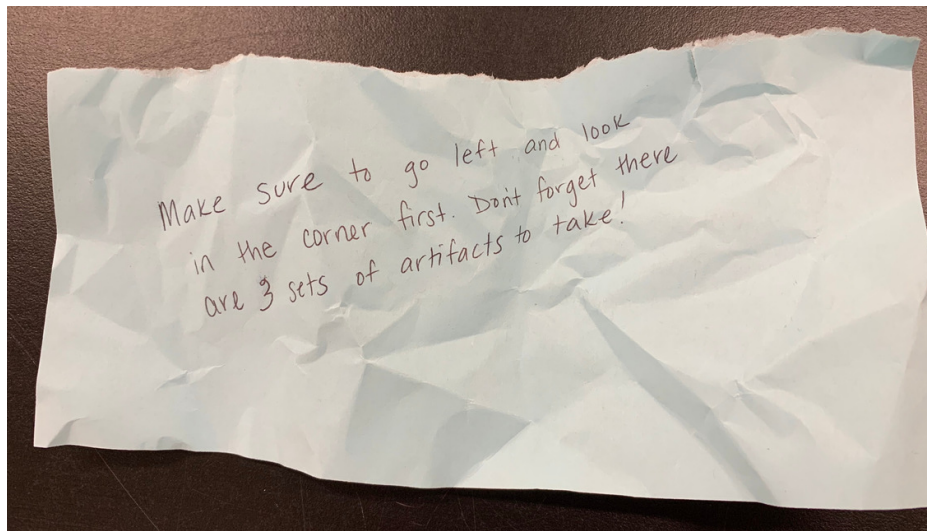
4 small surveillance cameras were covered up on the night of the crime in the Mesopotamia exhibit. Police were unable to see who stole the items because the cameras had been blocked.



Notes from the Police:



Note found at crime scene:

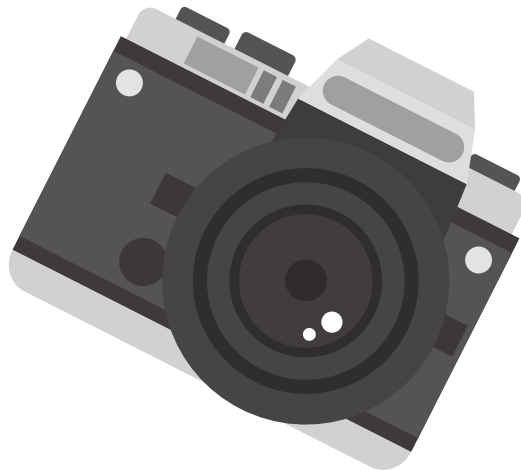


Signs for Suspects

Each of the following signs can be printed and folded in half to sit on a table or desk in front of each suspect.

Suspect 1:

Tourist



Suspect 2:

Security Guard



Suspect 3:

Construction

Worker



Information on Who Committed The Crime

There were actually two criminals! The security guard worked with the tourist to steal the artifacts. While the tourist was the one who actually stole the artifacts, the security guard was the accomplice and is also guilty.

The following evidence was used to solve the crime:

- The blood found on the case was A Positive, which matches the tourist's blood type.
- The note showed that more than one person was most likely involved in the crime because the note was giving instructions to steal multiple artifacts.
- The note also provides a handwriting sample, which is similar to the handwriting of the security guard. The security guard wrote the note to the tourist with directions on how to cover up the cameras and where to locate keys to steal the items.

The following information was used during interviews to solve the crime:

- If you were to ask the suspects how they know each other, only the security guard and the tourist knew each other and are actually life-long friends.
- If you were to ask the suspects if they have ever been arrested or found guilty of a crime before, the tourist would say that he/she has been arrested and found guilty for trespassing on the property of an art museum.
- If you were to ask the suspects about their knowledge of Mesopotamia and the artifacts, only the tourist and security guard have a lot of knowledge.
- If you were to ask the suspects if they know where the surveillance cameras are, only the security guard knew.
- If you were to ask the suspects about whether they knew about the clay envelope having a jagged edge, only the security guard and the tourist knew.